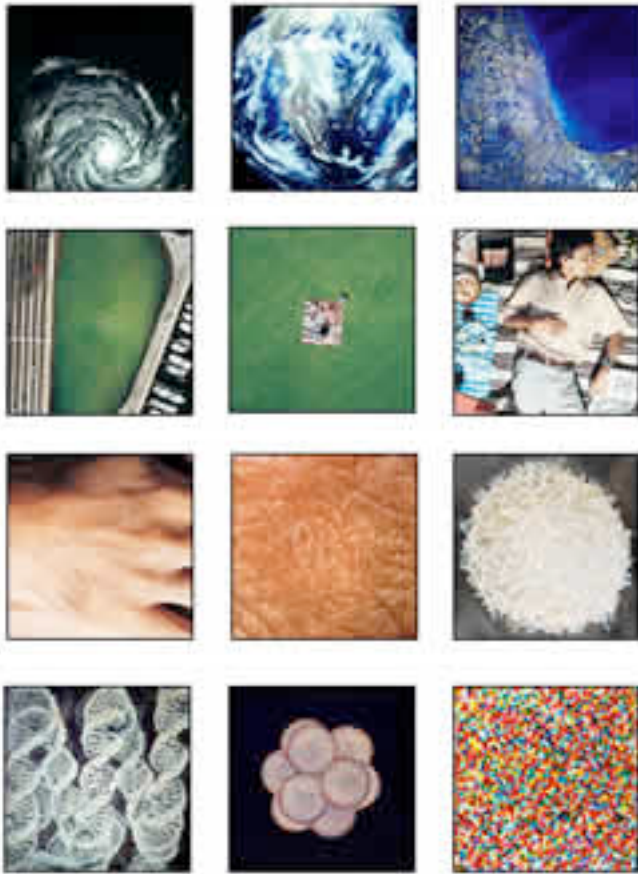


JOIN CDI & KRANKIES IN CELEBRATING POWERS OF 10 DAY



The
Center for Design Innovation
with
Krankies/Wherehouse
and
creative collaborators

are pleased to conduct discussion
& screening of the landmark film

POWERS OF 10

featuring examples of work from
the portfolio of Charles & Ray
Eames and their collaborators

6:30pm-? Friday 10 October 2008
at Krankies/Wherehouse
211 East Third Street
Winston-Salem, NC

There is no charge for this event.

From the DVD: Charles and Ray Eames are among the finest American designers of the 20th century. They are best known for their groundbreaking contributions to architecture, furniture design (the Eames Chair), industrial design and manufacturing, and the photographic arts. The legacy of this husband and wife team includes more than 75 films that reflect the breadth and depth of their interests and the integrity of their vision.

POWERS OF TEN takes us on an adventure in magnitudes. Starting at a picnic by the lakeside in Chicago, this famous film transports us to the outer edges of the universe. Every ten seconds we view the starting from ten times farther out until our own galaxy is visible only as a speck of light among many others. Returning to Earth with breathtaking speed, we move inward - into the hand of the sleeping picnicker - with ten times more magnification every ten seconds. Our journey ends inside a proton of a carbon atom within a DNA molecule in a white blood cell. This DVD also includes the original version of POWERS OF TEN, produced in 1968, entitled A Rough Sketch for a Proposed Film Dealing with the Powers of Ten and the Relative Size of Things in the Universe, a remarkable film in its own right.

17 Minutes Executive Producer Lucia Eames / Produced by Eames Demetrios and Shelley Mills / Introduction Narrated by Gregory Peck

901: AFTER 45 YEARS OF WORKING

901 is a powerful record of the Eameses' famed design space at 901 Washington Blvd. in Venice, California. It was here that the groundbreaking design team developed furniture, made films, created architecture, produced exhibitions and much more - work that continues to shape our world and the way we see it. The film also chronicles the process of closing the workshop of 45 years after Ray Eames' death.

As the musical tower developed by Charles and Ray plays its cascade of music, the camera roams, using the office itself as a prism through which viewers can observe their lives and work. The film offers viewers a last chance to visit the shop and celebrate its joyous texture and aesthetic. 901 is a wonderful complementary to the Eames films and a whirlwind introduction to the Eames legacy.

29 Minutes Produced by Eames Demetrios and Lucia Eames / A Production of the Eames Office / Directed and Photographed by Eames Demetrios

Images from <http://powersof10.com/> See also <http://www.krankiescoffee.com/> <http://www.centerfordesigninnovation.org/>
CDI is an inter-institutional research center of the University of North Carolina, building on strengths of the UNC School of the Arts, Winston-Salem State University, and Forsyth Technical Community College.
This event may be recorded for CDI's archives.